



DIABETES UK
KNOW DIABETES. FIGHT DIABETES.



NIHR | National Institute for Health Research

THE ELSA STUDY NEWSLETTER

1 - ELSA RECRUITMENT

2 - NATIONAL ROLL-OUT

3 - SUPPORT FOR FAMILIES

4 - SCREENING WORDMAP

5 - ELSA: MEET THE TEAM

6 - SUMMER FUNDRAISING



1 - ELSA RECRUITMENT



6 - SUMMER FUNDRAISING



2 - NATIONAL ROLL-OUT



3 - SUPPORT FOR FAMILIES



ELSA RECRUITMENT



20,000

7,800

A huge thankyou to all the families who have signed up to the ELSA Study.

Over 7,800 children have been consented.

Our Clinical Immunology Service at the University of Birmingham have received and analysed over 4000 screening tests. All these results have been returned to families.

So far, 97 children have screened positive in ELSA. These families have been referred for further testing to 1 of 14 ELSA research hospitals across the UK (See Map).

ELSA will be opening very soon in Northern Ireland and opening more widely across Scotland. Please check our website and social media for these announcements.

MEET THE ELSA TEAM:

SPOTLIGHT ON GAIL HERITAGE

Gail graduated with a degree in Forensic Science and has worked in various academic roles. Gail has worked at the University of Birmingham as a Clinical Trials Practitioner for over 15 years gaining extensive experience in both study coordination and study management support.

Gail was the former trial Manager for the ELSA study. Gail joined ELSA in 2021 and led the team to success at every stage. We wish Gail every success in her new role!



NATIONAL ROLL-OUT



We are delighted to be working with schools and general practices across the UK to bring ELSA diabetes screening clinics to the heart of their communities. If you would like us to bring ELSA to a school or community setting near you, please get in touch!

SCREENING WORDMAP

What word or phrase would you use to describe the ELSA screening trial?

We are creating a wordmap to depict families' experiences of the ELSA study. We invite you to put your word and comments forward here: <https://forms.gle/wfgWJZRCgvEZCmd68>. We will share the word map in the next ELSA newsletter. Thank you!



SUMMER FUNDRAISING

Tri for type 1 – August 2023:

In August 2023, the ELSA team are swimming to raise money for JDRF UK! If you would like to donate to this important cause, please visit our fundraising page:

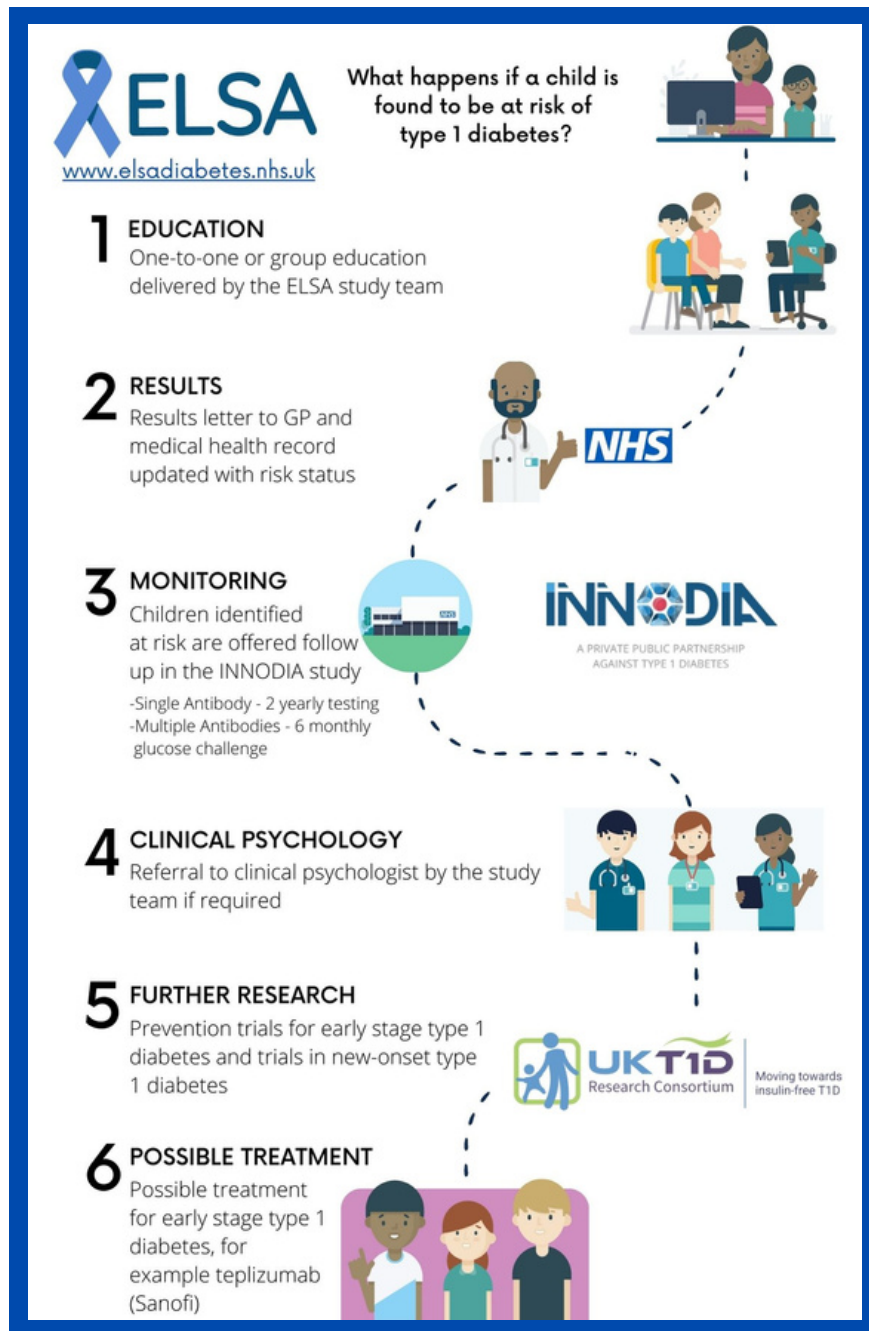
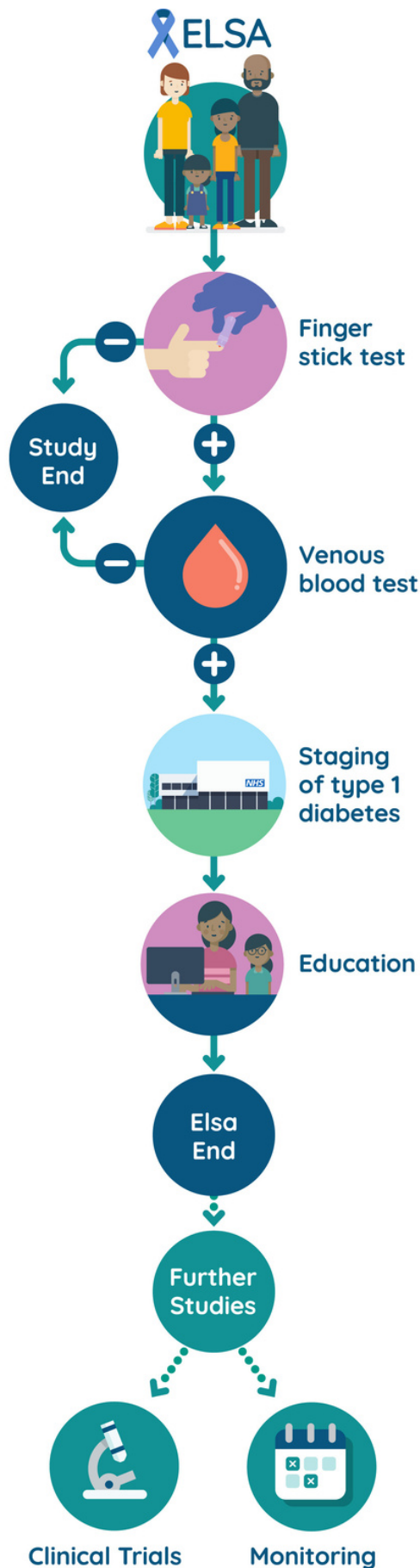
<https://support.jdrf.org.uk/fundraisers/universityofbirminghamimmunologyandimmunotherapy>

Thank you!



A: ELSA STUDY STAGES:

B: SUPPORT FOR FAMILIES:



THANKYOU FOR READING!

